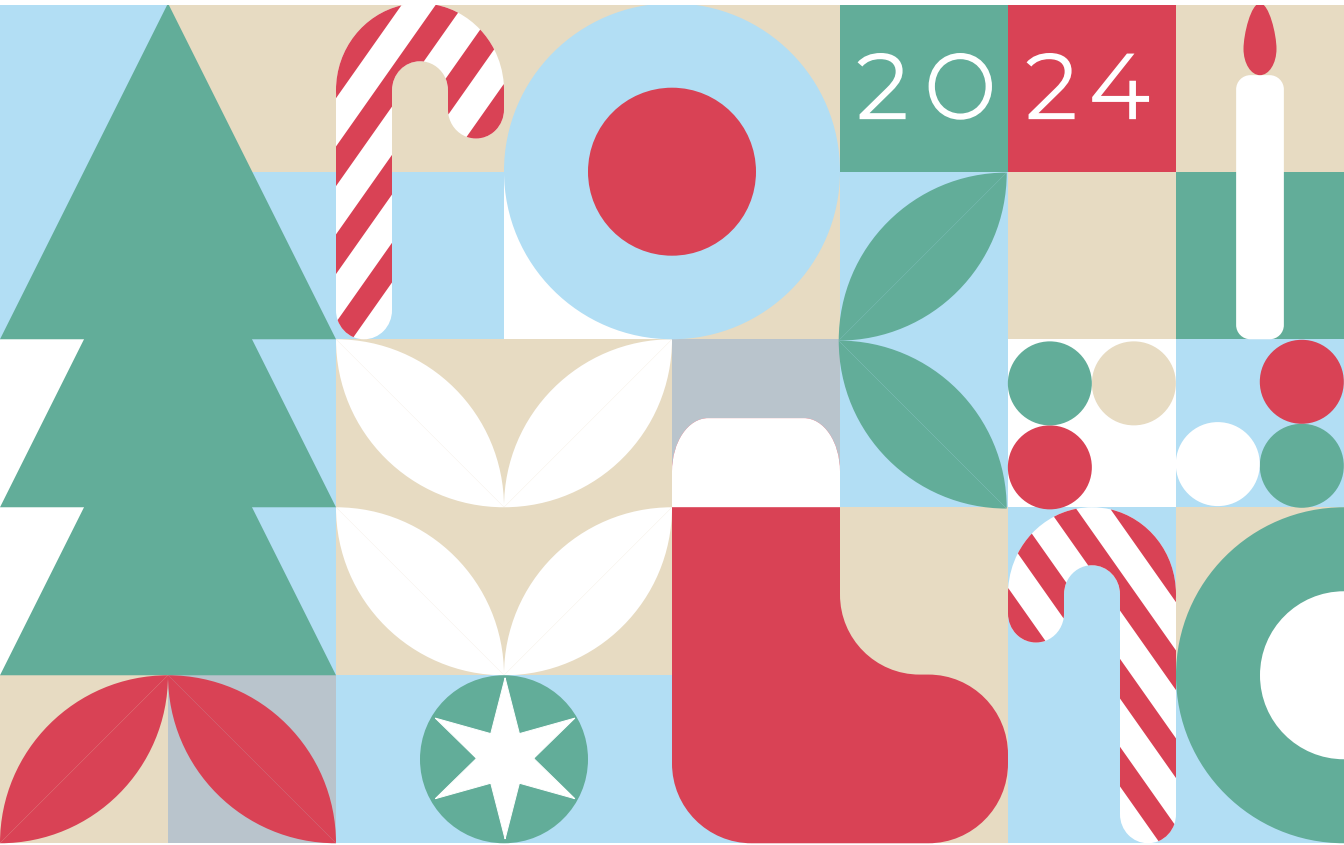




**FOR**  
Christmas



2024

Gift Catalog | Bless Others Near & Far

# CONTENTS

Christmas Giving Options	2
<b>Give a Present</b>	4
<b>Support a Project</b>	6
The Five Passions of Christ Church	14
Oh What Fun! Christmas Party	16

**With crisp winter snowfall and dazzling displays, Christmas is beautiful. As we sing our favorite carols or return to familiar traditions, Christmas can be heart-warming. With bountiful family feasts and festive gatherings with friends, Christmas is busy.**

Along with the flurry of activity this season brings, Christmas can also be crowded. We encounter crowds in stores as people hunt for that perfect gift. We find crowds in airports and on highways as people travel to be with loved ones. Even our mental space may be crowded with concerns about economic uncertainty, civil unrest and the growing political divide.

In this crowded season, we encourage you to join us in creating a bit of space. Here at Christ Church, we believe in creating space for God's presence in our hearts and God's work in our lives.

**Create space for WONDER as you reflect on the meaning of Christmas.**

**Create space to BE REFRESHED in God's presence.**

**Create space to REST IN GOD'S AMAZING LOVE for you.**

**Our FOR Christmas giving initiative is one way Christ Church creates space in a crowded and complex world.** Donating candy and presents helps families in the Chicago area experience joy and celebration amid economic strain. Supporting mission partner projects helps people in Chicagoland and around the world to thrive and grow in their faith.



**No matter how crowded your Christmas, as you create space this season, may the Prince of Peace meet you there.**



# FOR Christmas



## HOW TO PARTICIPATE

In these pages you'll find a variety of giving options that have nothing to do with life's luxuries. Instead, you'll find creative ways to bless people across the city and around the world through special projects, chosen by our mission partners.

The FOR Christmas initiative offers three ways to bless others.

### GIVE A PRESENT

that will be gifted to a child by their parents, affirming dignity and strengthening families.

### SUPPORT A PROJECT

-serving one of our global or domestic mission partners or our LIFT Market food ministry to facilitate lasting life change.

### DONATE CANDY FOR A STOCKING

that will be given to a child on behalf of Christ Church, allowing that child to feel known and loved.

**Want to spread joy even farther?** Each item you select has a corresponding card that you can give someone special on your Christmas list, indicating that you've made a gift on their behalf. You can find these cards at either Christ Church campus.



**We hope you'll create space to join us in praying for our mission partners.**

Your prayers for their safety, health and ministry are greatly appreciated and your support of their work is a tremendous encouragement. Thank you for embodying the heart of the God who entered our space to meet our deepest needs. Celebrating Christmas reminds us that the gift of a little child can change the world.

May God surround you with His peace and His presence in this sacred season.

Christ Church Missions Team

# GIVING OPTIONS



12  
07

GIFT  
DROP-OFF  
DEADLINE

## GIVE A PRESENT

Bless a child with a gift  
on behalf of their family

1. **EXPLORE** the mission partners on pages 4–5.
2. **VISIT** [ChristChurch.us/ForChristmas](http://ChristChurch.us/ForChristmas) and click on the **Give a Present** button to peruse a list of specific items requested.
3. **PURCHASE** gifts in one of two ways:  
Purchase via the link on the web page and have the presents delivered to your home.  
OR  
“Reserve” the gift on the web page. This means you commit to purchasing it elsewhere—either in a store or online.
4. **BRING** the gift(s) to either Christ Church campus for dropoff. The deadline for present dropoff is Saturday, December 7, at the Oh What Fun! Christmas Party. (Party details on page 16.)

## SUPPORT A PROJECT

Make a financial donation to bless our  
mission partners and the people they serve

1. **EXPLORE** the mission partners and projects on pages 6–13.
2. **VISIT** [ChristChurch.us/ForChristmas](http://ChristChurch.us/ForChristmas) and click on the **Support a Project** button to make financial donations to projects.
3. **SHARE** the joy by giving “A Gift on Your Behalf” cards to loved ones. You can find these cards at either Christ Church campus now through December 31.
4. The deadline for financial donations to partner projects is December 31.



## DONATE CANDY FOR A STOCKING

Put a smile on the face of a child

1. **PURCHASE** candies of your choice (no nuts, please). Candy suggestions: Skittles, Starburst, Sweet Tarts, Sour Patch Kids, plain M&M's, plain Hersey's Kisses, Spearmint Starlites and candy canes.
2. **DROP OFF** the candy at either Christ Church campus. The deadline for candy dropoff is Saturday, December 7, at the Oh What Fun! Christmas Party.

**HELP FILL THE STOCKINGS |** The candy will be used to fill stockings during two Christ Church holiday events. The candy-filled stockings will be given to children in Chicagoland through our mission partners and the Christ Church LIFT Market.

**Oh What Fun! Christmas Party |** Oak Brook  
Saturday, December 7 | 9:00 a.m.–3:00 p.m.

**Chilly Chili Chowdown |** Butterfield  
Sunday, December 8 | 11:30 a.m.



Scan the QR code for more information about For Christmas and links to the **Give a Present** and **Support a Project** forms, or email us at [Christmas@ChristChurch.us](mailto:Christmas@ChristChurch.us).

# Give a Present

Bless a child with a gift on behalf of their family

■ **BREAKTHROUGH** works to create a safe, stable, engaged Garfield Park where success is the norm and everyone thrives. Breakthrough offers many ministries to deeply invest in the community through spiritual formation, education and youth development, housing, economic opportunity, health initiatives and violence prevention. Breakthrough will offer presents in their Christmas store at affordable prices, affirming dignity and bringing joy to children in the Garfield Park community.

■ **BY THE HAND CLUB FOR KIDS** is a Christ-centered, after-school program that takes kids by the hand and walks with them from kindergarten through college, loving and nurturing them—mind, body and soul. Your present will bless a child who is part of the By the Hand Club in the North Austin neighborhood of Chicago.

■ **CARING NETWORK ILLINOIS** is the first step for women facing an unplanned pregnancy. They welcome women with unconditional love, counsel and resources that offer the light of truth—changing hearts and saving lives. They also provide support for both mothers and babies after birth. Your gift will help these families as they adjust to a new life together.

■ **INNER CITY IMPACT (ICI)** uses after-school programs, camps and leadership development to disciple children in Cicero and Logan Square. ICI helps kids build healthy relationships, increase confidence, learn new life skills, develop spiritually and redefine their self-worth. Your gift will bring joy to a child in ICI's program.

■ **LOVE INC** seeks to mobilize the local church to transform lives and communities in the name of Christ. LOVE is a partnership of many local churches, working together to unify the Body of Christ around meeting the physical and spiritual needs of our neighbors. Your gift will support the Christmas store serving DuPage County families in need this holiday season.

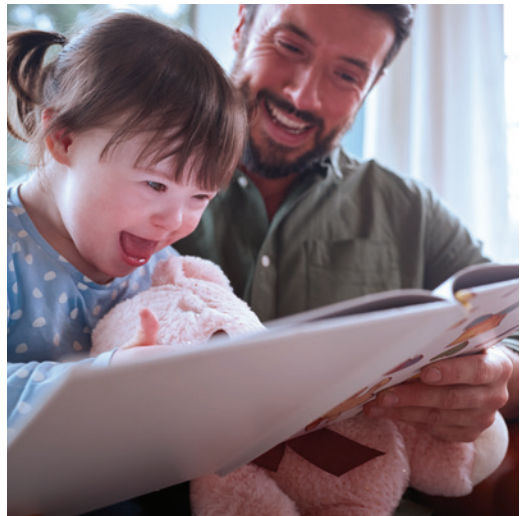




■ **OUTREACH** seeks to transform lives and communities by creating opportunities where barriers exist; by loving our neighbors in word and deed; and by shining the light of hope on all peoples' God-given potential. The Outreach York location is focused on providing programs for children, offering counseling and connecting people in the community with resources. Presents will be featured in Outreach's Christmas store, which offers gifts at prices that are accessible for every income level.

■ **PRISON FELLOWSHIP** works to bring hope and restoration to prisoners, families and communities impacted by crime and incarceration. Their Christmas Angel Tree program provides presents to children of imprisoned moms and dads. Your gift will bring joy and restoration to a family separated by incarceration.

■ **THE SALVATION ARMY** is an international movement and an evangelical part of the universal Christian Church. Its message is based on the Bible, its ministry is motivated by the love of God and its mission is to preach the Gospel of Jesus Christ and to meet human needs in His name without discrimination. Christ Church has partnered with the Salvation Army for many years to operate our Food Pantry ministry. Your gift will empower families to give their children presents from the Salvation Army Christmas store.



Scan to explore the specific gifts these partners have requested for the people they serve.



# Support a Project

## DOMESTIC

Bless  
our local  
partners  
and the  
people  
they serve



■ **ALTAR FLY FISHING** hosts leadership retreats focusing on the soul health and well-being of leaders in churches, nonprofits and in the marketplace. Altar retreats help leaders grow in personal awareness, experience refreshment and renewal and clarify next steps. Altar also provides further growth opportunities for their journey of life and leadership.

★ **\$35** | Your gift provides one pastor with a retreat guidebook and program materials. These resources are full of tools and exercises designed to support them for the next year of their lifelong journey of soul and leadership health.

■ **THE CHRIST CHURCH LIFT CENTER** exists to lift people toward their God-given potential. Providing for physical and spiritual needs, offering education and connecting people with neighborhood resources, the LIFT Center provides tools to help people in crisis achieve independence. The LIFT Market is the next iteration of Christ Church's Food Pantry ministry, which has been serving families for 20 years. The new LIFT Market will have even more healthy food choices, including fresh produce, refrigerated and frozen foods, and household staples.

★ **\$15** | Your gift provides food for this crucial ministry to our neighbors.

LIFT





■ **CRU** exists to help students come to know Jesus, grow in their faith and go to their families, communities and the world to share God's love. Each year, Cru hosts a Winter Conference in Indianapolis, where students experience Jesus, grow together in their faith and discover their place in the mission of God. This conference also has a strong missions focus and many students go on to spend a year in the mission field.



★ **\$30** | Your gift goes toward a scholarship for a local college student to attend the annual Cru Winter Conference.



## EMMAUS

■ **EMMAUS** works to prevent exploitation and empower male survivors who have been victims of trafficking to rebuild their lives. The ever-present love of Jesus Christ inspires Emmaus every day as they seek to affirm worth, reject stigma and offer the hope of the Gospel to their participants. The Journey to Healing programs help men escape commercial exploitation through faith-based support conducted at the Survivor Support Center, located in the West Loop.

★ **\$35** | Your gift covers materials needed for Emmaus' life skills classes and spiritual enrichment programs, helping survivors make a new life for themselves.



Scan to make donations to support these mission projects.

# Support a Project DOMESTIC

Bless  
our local  
partners  
and the  
people  
they serve

■ **FOX VALLEY CHRISTIAN ACTION** (FVCA) is a non-profit ministry dedicated to discipling people in under-resourced communities of the Fox Valley in partnership with local churches. Throughout the school year, FVCA provides a weekly discipleship and personal development program for teenagers from low-income communities. This enriching program includes dinner for each of the teens. FVCA also provides two overnight retreats for the teens in this program. All of these programs are provided at no cost to the families that they serve.

- ★ \$50 | Your gift covers the cost of weekly dinner for one teen for the school year.



■ **PACIFIC GARDEN MISSION** (PGM) is the country's oldest continuously operating Gospel rescue mission and works to save and restore the lives of homeless and hurting men, women and children. PGM serves with the compassion of Christ and ministers with the transforming message of the Gospel. This winter, PGM is committed to providing hats, gloves and warm sweaters to keep mothers and children warm.

- ★ \$25 | Your gift provides hats, gloves and sweaters for moms and kids for Chicago's cold winter months.





■ **RESILIENT** offers opportunities for youth to overcome challenges and reach a new level of flourishing. Resilient's Upstart Program prepares young people to seek rewarding, life-long careers in the construction trades. Their biblical approach to life skills and technical development provides local non-college-bound students a great start to a life of sustainable employment.



★ **\$25** | Your gift offers students the ability to apply for the entrance exam toward a construction trade apprenticeship program.

■ The mission of **SALAM CHRISTIAN FELLOWSHIP** is to proclaim Jesus Christ crucified and risen from the dead, the Savior of the world, to Muslims from the Middle East and North Africa living in Chicagoland. Salam offers Bible studies and English classes for about 15 students, and the number is growing. Students are from countries including Syria, Iraq, Iran, Pakistan, Ethiopia, Sudan, Morocco and the Central Africa region. Salam builds friendly relationships in order to share the Gospel with this diverse array of people.



★ **\$25** | Your gift provides materials, transportation and a meal for students learning English.



# Support a Project

## GLOBAL

LIFT others  
around the  
world this  
Christmas



■ Caitlyn Lawrence serves with **ALLINTA RUWANA** to provide vital healthcare services and medical well-child checks for about 1,000 children who come from some of the most vulnerable families in Potosí, a mountainous mining town in Bolivia. Each year, many families are unable to purchase the glasses their children need. Allinta Ruwana provides glasses to these children.

★ **\$40** | Your gift provides a medical exam and glasses for kids in Bolivia.

■ **DECISIÓN SPAIN** disciples Spanish youth through training and counseling courses. One facet of José Pablo Sanchez' work with Decisión focuses on the incarcerated. Through their efforts, many inmates have come to Christ and are growing in their new faith.

★ **\$15** | Your gift provides discipleship books for women in prison in Spain.

■ **GLOBAL DISCIPLESHIP INITIATIVE** (GDI) partners with local churches to equip pastors and leaders to create rich communities of discipleship. Pastor Greg Ogden and GDI are actively working in Ukraine to create small discipleship groups. This ministry uses a simple, reproducible approach to making and multiplying disciples.

★ **\$15** | Your gift provides materials for pastors and leaders in Ukraine to continue the disciple-making movement already underway.







■ **INDIA GOSPEL LEAGUE** shares the Gospel and meets the practical needs of the rural Indian village communities they serve. One way they do this is by helping families establish small businesses through microfinance, lifting families out of poverty and affirming dignity.

★ **\$50** | Your gift provides funding for a family in rural India to create lasting change and achieve financial independence.

■ Through his work at **MUSALAHA**, Daniel Munayer teaches about and facilitates reconciliation, developing social trust and building relationships between Israelis and Palestinians. Musalaha's 5-day Israeli-Palestinian Children's Summer Camp provides a framework for Israeli and Palestinian children to meet in a fun and friendly atmosphere. Throughout the camp, children are guided towards building relationships with one another across faiths, communities and backgrounds. For the majority of children, the camp is the first opportunity to positively interact with someone from the "other" side. Through activities and Bible teachings, children learn to counter many of the stereotypes and misconceptions previously taught in their respective community narratives.



★ **\$100** | Your gift covers one day of this life-changing camp experience.



# Support a Project

## GLOBAL

Share the  
gifts of love  
and hope



■ **OC INTERNATIONAL** is dedicated to evangelism, discipleship and church planting in Praia, Cape Verde, an island nation off Africa's western coast. Through this ministry, J. Barbosa Oliveira is working to plant a church in a vibrant community of nearly 200 families, who also need a school and child care. Ministering to the children in this community will make a big impact as our mission partner prepares to plant a thriving church there.

★ **\$8** | Your gift provides one day of meals, care and education for a child in Cape Verde.

■ Sam Fiala, a child of Christ Church, works with **SOUTH AMERICA MISSION AIR (SAMAIR)** to provide transportation to missionaries and pastors as they carry the Gospel to remote places. These Kingdom workers focus on church planting, pastoral training and community development. SAMAIR seeks to "give wings to God's Word" and enable indigenous Gospel movements in South America.

★ **\$75** | Your gift will buy a seat on a flight for a Peruvian missionary working in the Amazon jungle.





■ Mama Maggie Gobran and **STEPHEN'S CHILDREN** are deeply committed to breaking the cycle of poverty in the poorest areas of Cairo, Egypt through education. They provide nutrition and medical help to care for kids—mind, body and soul. This ministry also provides mentoring and shares the Good News with children and their families.

★ **\$10** | Your gift provides clothes, shoes, books and other school supplies to new and returning students.

■ **WORDPARTNERS GLOBAL** longs to see the Word of God flowing powerfully through every church in every nation so that people everywhere are transformed through the beauty and power of the Gospel. This ministry is working to train and equip pastors in Kazakhstan to preach the Gospel. Many pastor small congregations of former Muslims in rural villages and travel great distances for training.

★ **\$65** | Your gift provides training for a pastor in Kazakhstan.

■ **WORLD RELIEF** is working in Burundi to provide practical lessons on health, faith, parenting and economic development. Volunteers serve and build relationships with families to support spiritual, emotional, mental and physical growth. This work leads to sustainable community development that transforms lives forever.

★ **\$50** | Your gift equips eight vulnerable households to take holistic steps out of poverty.



■ **NOT SURE WHERE TO GIVE?** If you'd like to bless all of our domestic and global mission partners, simply give to the **undesignated fund**. The missions team will allocate these gifts equitably to care for all of our partners. For a full list of mission partners, visit [ChristChurch.us/missions](http://ChristChurch.us/missions).





## The Five Passions of Christ Church

We believe that God's goodness, beauty and truth can transform lives, neighborhoods, cities and the world. That's why Christ Church gives our time, talents and resources to advance the following **FIVE CAUSES** that we are most passionate about.

### LIFTING WOMEN & CHILDREN

Jesus advocated for women and children in a time when few people did. As a result, we fund partners who work to protect kids and women from abuse; ensure that they are adequately fed, clothed and cared for; and provide them with the spiritual and academic nurture that increases their health and hope, and draws them closer to God.

### RELIEVING SUFFERING

The Gospel is about the "GOD Samaritan" who came to help people who are beaten, down in a ditch and without the resources to help themselves. Having experienced this grace from God, we are moved to offer relief to people who have been ravaged by crises and need practical help to get back on their feet.

In 2024 Christ Church Global Outreach (GO) Teams witnessed firsthand the work of our partners in Malawi (top), the Dominican Republic (right two photos) and Romania (far right).







## TRANSFORMING COMMUNITIES

The Bible reveals God's passion not only for individuals, but for the flourishing of whole neighborhoods and cities. For this reason, we invest in Christian ministries that advance integrated community development strategies, attending to needs such as clothing, shelter and housing; nutrition and healthcare; vocational assistance and micro-finance.

## DEVELOPING LEADERS

Jesus chose apostles who could not only influence individuals but multiply ministry that changed entire regions. In like fashion, we seek to identify catalytic change-makers and provide them with theological education, leadership training, financing, volunteer support and prayer that helps increase their impact.

## MULTIPLYING CHURCHES & DISCIPLES

The primary way God changes the world for the better is through the radiant influence of disciple-making churches. We, therefore, invest in individuals and ministries serious about evangelistic witness, discipleship and church-planting. In this way, we advance the redemptive work of Christ faster than any other measure.





# OH WHAT FUN!

**Christmas Party**

**Saturday, December 7**

**10:00 a.m.–3:00 p.m. | Oak Brook**

Get ready for a fun-filled family Christmas experience! Join us for a day of making meaningful memories with little ones you love this season.

**9:00–10:00 a.m. | This hour is reserved for families with disabilities that would benefit from lower lighting, softer music, less crowds and shorter lines.**

**EVERYONE IS WELCOME!**  
No admission fee required.

**Come see Christ Church transformed into a winter wonderland, complete with:**

- A Christmas train and petting zoo
- Bouncy houses and photo stations
- Face painting, crafts and cookie decorating
- Live music and carol-oke
- Stocking stuffing station to bless our neighbors
- FOR Christmas giving center



Christ Church  
501 Oak Brook Road, Oak Brook  
[ChristChurch.us/party](http://ChristChurch.us/party)





## PARTICIPATING IN THE MISSION OF GOD

**Jesus launched His public ministry with a splash. In His hometown of Nazareth, He stood in the synagogue and gave His mission statement:**

“The Spirit of the Lord is upon Me,  
because He has anointed Me  
to proclaim Good News to the poor.  
He has sent Me to proclaim liberty to the  
captives and recovering of sight to the blind,  
to set at liberty those who are oppressed,  
to proclaim the year of the Lord’s favor.”

LUKE 4:18–19

In Scripture, we see Jesus live into these words throughout His ministry every time He taught, healed, showed the love of God or demonstrated the power of God.

But Jesus didn’t do it alone. He invited His disciples to participate in the mission (Luke 9:1–9). Later, Jesus invited 72 followers to participate in the mission (Luke 10:1–23).

Today, as we celebrate the birth of Christ, Jesus calls each of us to participate in His mission of spreading the Good News, sharing the love of God and caring for the vulnerable among us.

**As a new year begins, there are many great ways to join in the mission of God with Christ Church:**

1. Sign up for our **monthly serve email** by scanning this code or visiting [ChristChurch.us/missions](https://ChristChurch.us/missions).
2. Join us for the **Christmas Food Pantry** December 14 at our Oak Brook campus. Learn more at [ChristChurch.us/FoodPantry](https://ChristChurch.us/FoodPantry).
3. Learn more about the **LIFT Center** at [ChristChurch.us/LiftCenter](https://ChristChurch.us/LiftCenter).
4. Come experience the **FOR Chicagoland First Saturday Serve**. New opportunities are available monthly. Learn more at [ChristChurch.us/ForChicagoland](https://ChristChurch.us/ForChicagoland).
5. Consider joining a **Global Outreach Team**. Learn more at [ChristChurch.us/GoTeams](https://ChristChurch.us/GoTeams).
6. Save the date for **Domestic Mission Fest** | May 2–4, 2025.



# CELEBRATE CHRISTMAS WITH US



## Oh What Fun! Christmas Party

Saturday, December 7

10:00 a.m.–3:00 p.m. | Oak Brook

See page 16 for details

## Chilly Chili Chowdown

Sunday, December 8

11:30 a.m. | Butterfield

## CarolFest

Sunday, December 15

3:00 & 6:00 p.m.

Oak Brook | Online

Join us for a beautiful Christmas concert. Free tickets available at [ChristChurch.us/CarolFest](http://ChristChurch.us/CarolFest)



## Parents' Night Out

Friday, December 13

6:00–9:00 p.m. | Butterfield

Registration required

Opens November 21

## ADVENT SERMON SERIES

Waiting | Parts 1–4

Sundays | December 1–22

## CHRISTMAS EVE WORSHIP SERVICES

Monday, December 23

Contemporary Worship

Oak Brook | 7:00\* p.m.

Tuesday, December 24

Contemporary Worship

Oak Brook | 1:00, 3:00\* & 5:00\* p.m.

Butterfield | 4:00 p.m.

Classic Candlelight Worship

Oak Brook | 7:00\*, 9:00 & 11:00 p.m.

\*No children's programming will be offered to allow families to worship together. Child care will be available for children 4 years and younger.

## CHRISTMAS DAY

Wednesday, December 25

We will not be gathering as a church community but hope you will enjoy celebrating with family and friends.

## WORSHIP

Sunday, December 29 | Family Sunday

Oak Brook | 9:00 a.m. | Classic Worship

10:45 a.m. | Contemporary Worship

Butterfield | 10:00 a.m. | Contemporary

CHRIST CHURCH 

501 Oak Brook Rd., Oak Brook | 630.654.1882 | [ChristChurch.us](http://ChristChurch.us)

 [ChristChurch.us](http://ChristChurch.us)

 [@ChristChurch.us](https://www.instagram.com/ChristChurch.us)

25361 Glen Park Rd., Lombard | 630.654.1884 | [ChristChurch.us](http://ChristChurch.us)

 Christ Church Butterfield

 [@ChristChurchBC](https://www.instagram.com/ChristChurchBC)



Scan to learn more about the holiday season at Christ Church.